

Micro-histology: how, when, why

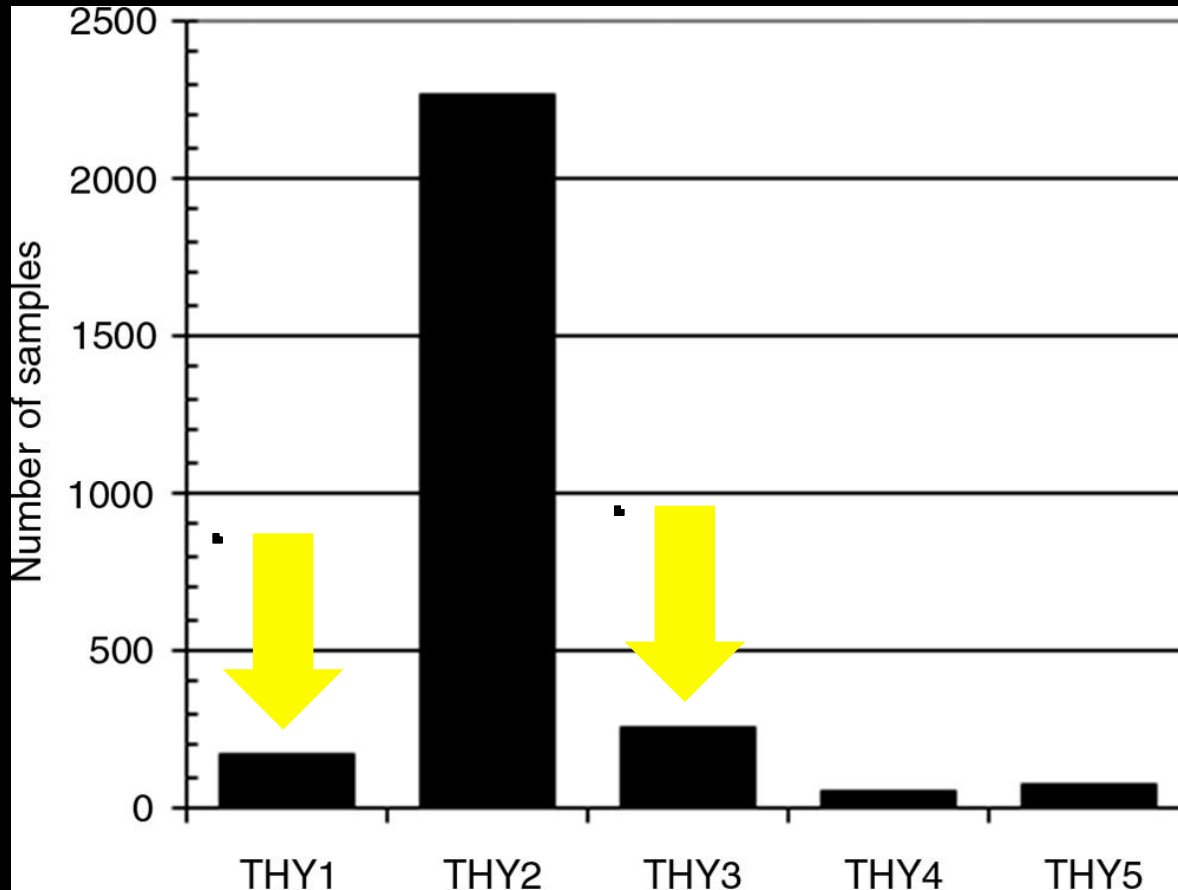
P. Trimboli

Ospedale Israelitico di Roma

Micro-histology

Histologic examination of **core** of thyroid nodule obtained by a **needle biopsy (CNB)**

Micro-histology: When?



Core Needle Biopsy

NCBI Resources How To

PubMed
PubMed

thyroid core needle biopsy

RSS Save search Advanced

Show additional filters

Display Settings: Summary, 20 per page, Sorted by Recently Added

Send to:

Text availability

Abstract available

Free full text available

Full text available

Publication dates

5 years

10 years

Custom range:

Species

Humans

Article types

Clinical Trial

Randomized Controlled Trial

Results: 1 to 20 of 83

1. [Thin core biopsy should help to discriminate thyroid nodules cytologically classified as indeterminate. A new sampling technique.](#)
Nasrollah N, Trimboli P, Guidobaldi L, Cicciarella Modica DD, Ventura C, Ramacciato G, Taccogna S, Romanelli F, Valabrega S, Crescenzi A.
Endocrine. 2012 Oct 16. [Epub ahead of print]
PMID: 23076753 [PubMed - as supplied by publisher]
[Related citations](#)

2. [Common breast problems.](#)
Satzman B, Fleegle S, Tully AS.
Am Fam Physician. 2012 Aug 15;86(4):343-9.
PMID: 22963023 [PubMed - in process]
[Related citations](#)

Core Needle Biopsy

Combined CNB/FNA allows to avoid unnecessary surgery

Core Needle Biopsy

Park et al. Role of core needle biopsy and ultrasonographic finding in management of indeterminate thyroid nodules. *Head Neck* 33, 160-165 (2011).

Oppenheimer et al. How to interpret thyroid biopsy results: a three-year retrospective interventional radiology experience. *Cardiovasc. Intervent. Radiol.* 33, 800-805 (2010).

Harvey et al. Sonographic features of indeterminate thyroid nodules. *J. Clin. Ultrasound.* 33, 57-61 (2005).

Zhang et al. Thin needle aspiration versus core-needle biopsy for the evaluation of thyroid nodules. *Thyroid* 14, 1114-1118 (2004).

Screaton et al. Use of core needle biopsy in the diagnosis of thyroid nodules. *Thyroid* 13, 827-832 (2003).

Sung et al. Diagnostic accuracy of fine-needle aspiration versus core-needle biopsy for the diagnosis of thyroid malignancy in a clinical cohort. *Eur. Radiol.* 22, 1564-1572 (2012).

Na et al. Core-Needle Biopsy Is More Useful Than Repeat Fine-Needle Aspiration in Thyroid Nodules Read as Nondiagnostic or Atypia of Undetermined Significance by the Bethesda System for Reporting Thyroid Cytopathology. *Thyroid* 22, 468-475 (2012).

CNB vs repeat FNA

Diagnostic accuracy of fine-needle aspiration versus core-needle biopsy for the diagnosis of thyroid malignancy in a clinical cohort

Jin Yong Sung • Dong Gyu Na • Kyu Sun Kim •
Hyunju Yoo • Hunkyung Lee • Ji-hoon Kim •
Jung Hwan Baek

- 18-G needle
- 1127 patients undergoing FNA and CNB
- 555 nodules with final diagnosis

Diagnostic results	FNA	CNB	FNA/CNB
Non-diagnostic	34 (6.1%)	8 (1.4%)	1 (0.2%)
Benign	199 (35.9%)	195 (35.1%)	195 (35.1%)
AUS/FLUS	101 (18.2%)	63 (11.4%)	56 (10.1%)
FN/SFN	3 (0.5%)	11 (2.0%)	13 (2.3%)
Suspected malignancy	67 (12.1%)	25 (4.5%)	31 (5.6%)
Malignancy	151 (27.2%)	253 (45.6%)	259 (46.7%)

Core-Needle Biopsy Is More Useful Than Repeat
Fine-Needle Aspiration in Thyroid Nodules Read as
Nondiagnostic or Atypia of Undetermined Significance
by the Bethesda System for Reporting Thyroid Cytopathology

Dong Gyu Na,¹ Ji-hoon Kim,² Jin Yong Sung,³ Jung Hwan Baik,⁴ Kyeong Cheon Jung,⁵
Hunkyung Lee,⁶ and Hyunju Yoo⁷

- 18-G needle
- 161 **Tir 3** (104 with final diagnosis)
- **repeat FNA vs CNB**

104 Tir 3

39 benign 65 cancers

CNB

26

44

Repeat FNA

27

22

Ultrasound-Guided Percutaneous Thyroid Nodule Core Biopsy: Clinical Utility in Patients with Prior Nondiagnostic Fine-Needle Aspirate

Anthony E. Samir,¹ Abhinav Vij,¹ Melanie K. Seale,¹ Gaurav Desai,¹ Elkan Halpern,²
William C. Faquin,³ Sareh Parangi,⁴ Peter F. Hahn,¹ and Gilbert H. Daniels^{5,6}

- 20-G needle CNB
- 90 inadequate cytologies

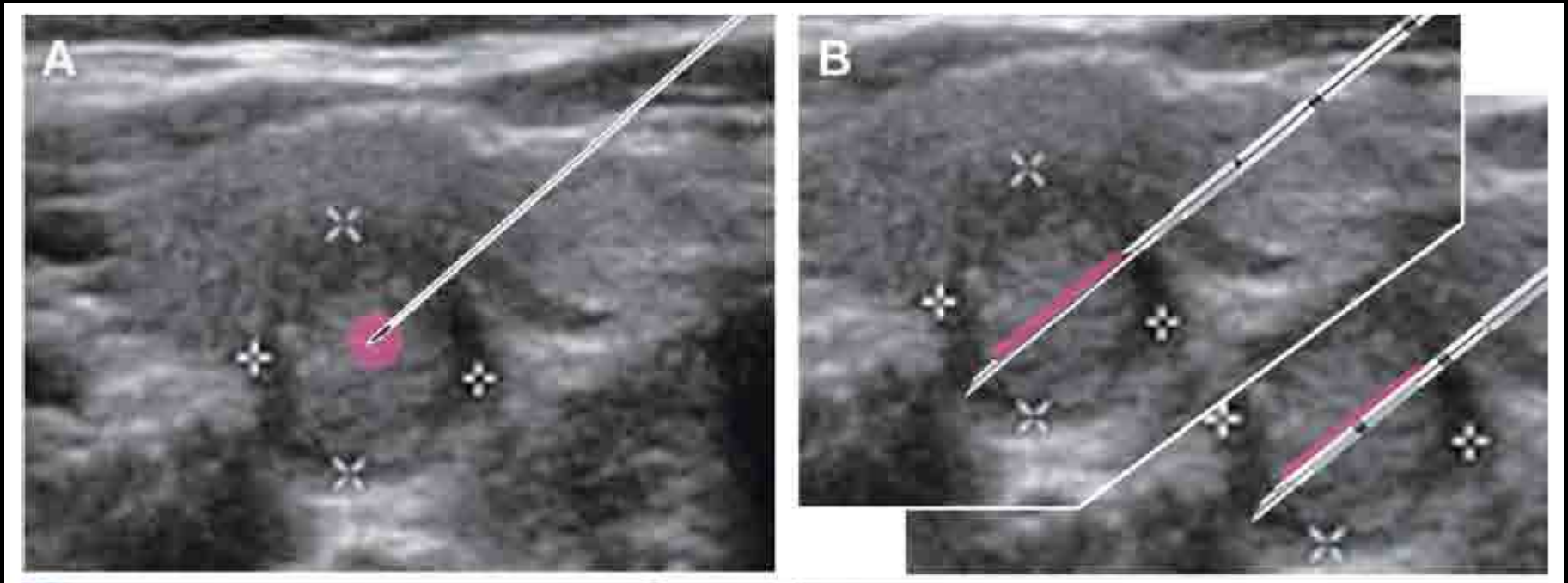
The combination **repeat FNA/CNB** classified
as diagnostic 87% of lesions

ROLE OF CORE NEEDLE BIOPSY AND ULTRASONOGRAPHIC FINDING IN MANAGEMENT OF INDETERMINATE THYROID NODULES

Kyung Tae Park, MD,¹ Soon-Hyun Ahn, MD,¹ Ji-Hun Mo, MD,¹ Young Joo Park, MD,²
Do Joong Park, MD,³ Sang Il Choi, MD,⁴ So-Yeon Park, MD⁵

258 nodules with indeterminate at cytology

	Diagnostic	Nondiagnostic
Second FNA ($n = 142$)	73 (51.4%)	69 (48.6%)
Core needle	53 (98.2%)	1 (1.8%)



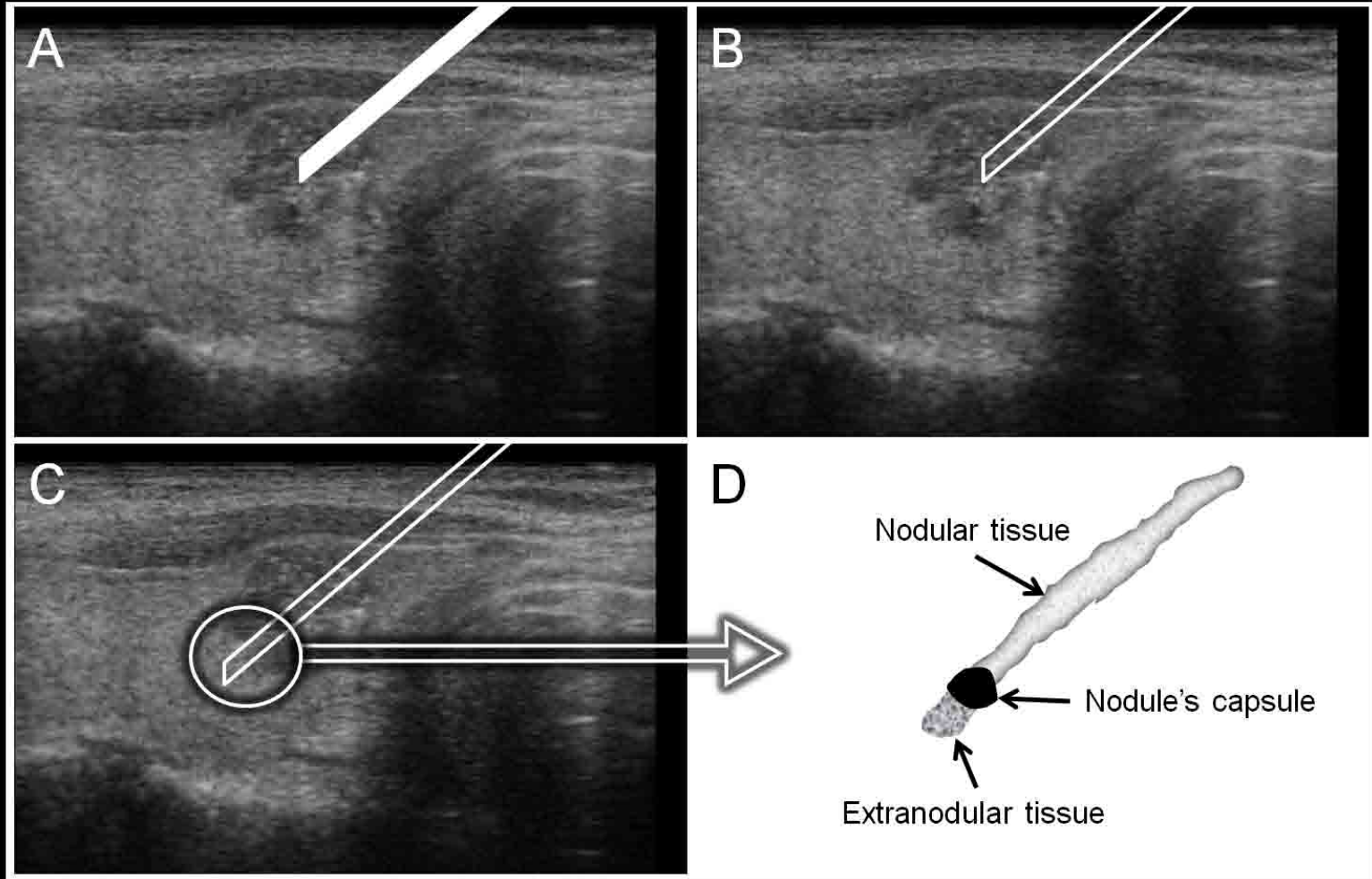
FNA

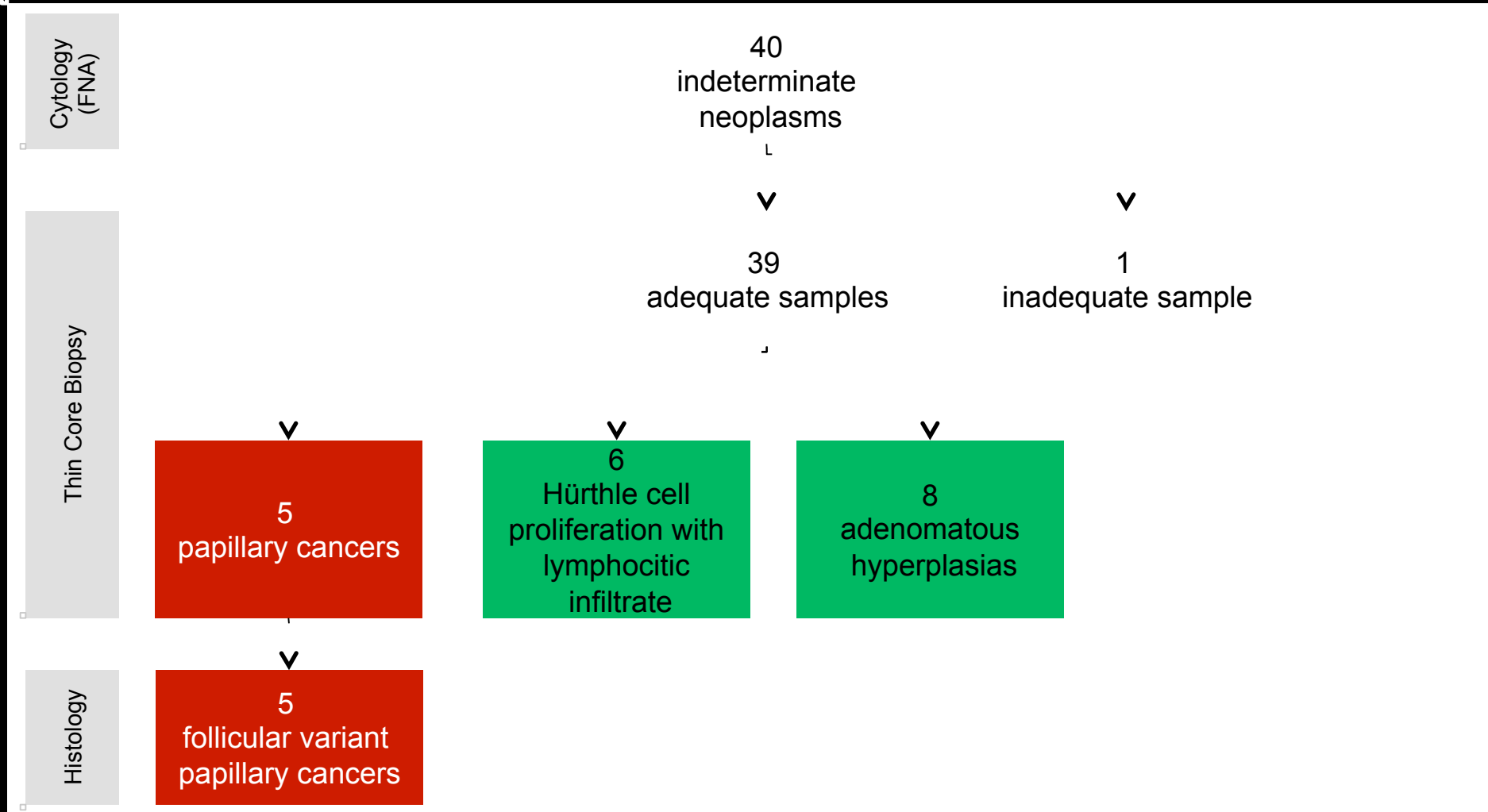
CNB by 18-G needle

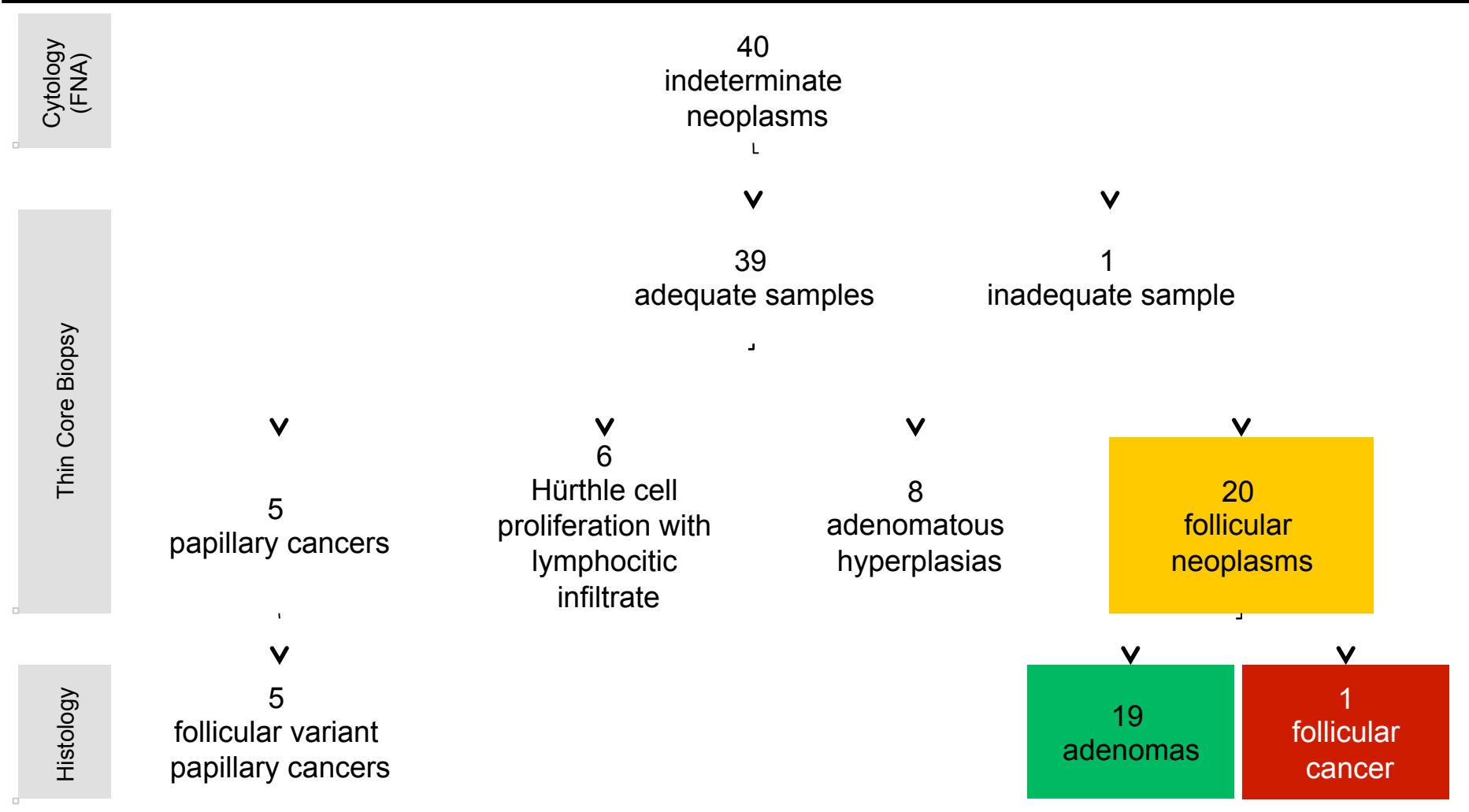
Thin core biopsy should help to discriminate thyroid nodules cytologically classified as indeterminate. A new sampling technique

Naim Nasrollah • Pierpaolo Trimboli • Leo Guidobaldi • Davide D. Ciciarella Modica •
Claudio Ventura • Giovanni Ramacciato • Silvia Taccogna • Francesco Romanelli •
Stefano Valabrega • Anna Crescenzi

- 21-G needle
- 40 **Tir 3**
- **new sampling technique**

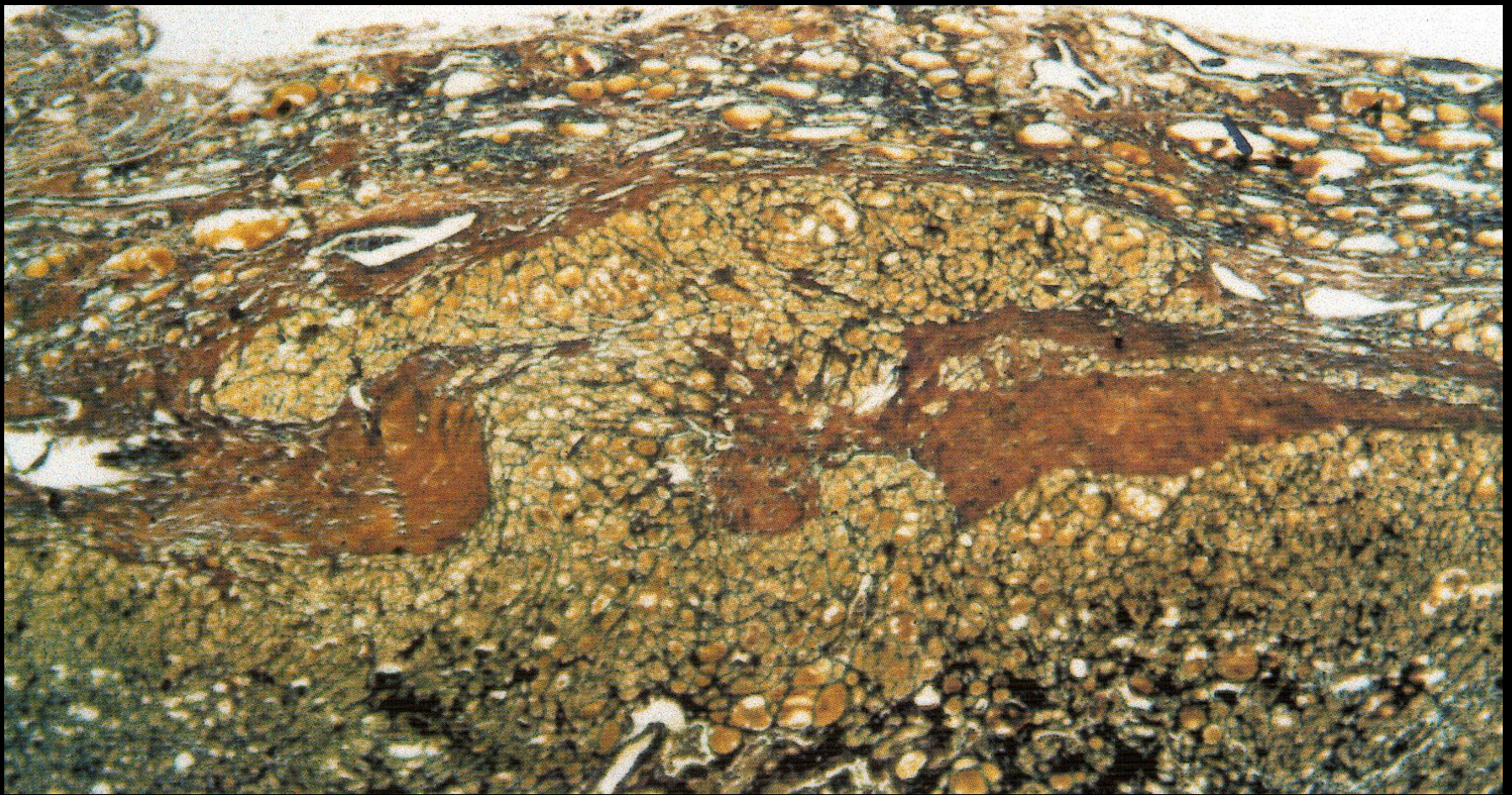








FTC: evaluation of **whole** capsule



Conclusions

CNB: complementary test in nodules with non conclusive outcome by FNA

CNB vs FNA Reduced % of both inadequate and indeterminate reports

Combination of CNB/repeat FNA Improves the accuracy of CNB and conventional FNA as a single test.